

GENERAL INSTALLATION INSTRUCTIONS:

1. Prior to installing new faucet ,flush supply lines to remove any accumulated debris.Accumulated debris can damage new faucet.
2. Faucets should be installed by a qualified & experienced person to ensure proper installation.
3. Water supply pressure should not exceed 1.0MPa. For best faucet performance, hot&cold supply pressures should be approximately equal.
4. Faucet is for indoor use only. The hot water supply temperature should not exceed 90°C. To avoid damaging faucet,the ambient temperature at the site of installation should be greater than 3°C and less than 90°C.
5. Clean faucet with only water and a soft cloth. Do not use abrasive cleanning pads or harsh/abrasive chemicals,these will damage faucet finish.
6. If water flow decreases over time,remove aerator & rinse out accumulated debris.
7. Use faucet only as directed in instruction manual, do not abuse or misuse faucet.
8. Keep insruction manual and any special tools provided for maintenance & future reference.
9. Always turn water supply OFF before removing existing faucet or disassembling the valve. Open faucet handle to ensure complete water shut-off has been accomplished.
- 10.If faucet will not be used for a long period of time, shut off water supply to faucet. Open faucet handle to release pressure.

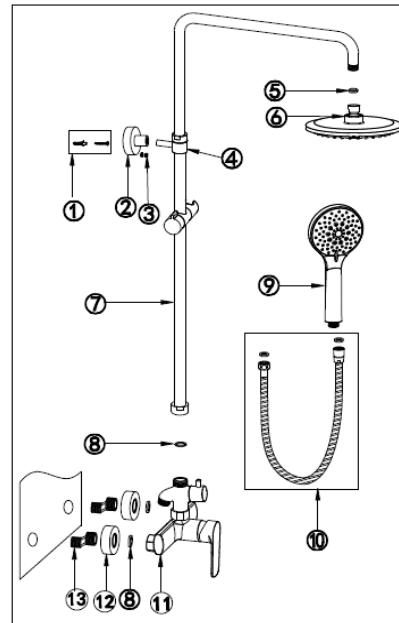
Fixing methods for square shower pipe item:15457/15458/15459:

1. Fix the wall fixing base to the wall, and use the connector to hold the square decoration plate to the wall fixing base.
2. Inset the vertical pipe to the horizontal pipe make sure the "O" rings are ok, and tighten the grub screw from inside of the thicker end of horizontal pipe.
3. Connect the thicker end of the horizontal pipe to the connector on wall and tighten the two grub screws on top of the horizontal pipe.



Installation Steps: (please refer to the below diagram)

1. Fix the two offset connectors (13) to the hot and cold water supplying holes, put the decoration covers (12) onto the offset connectors, put the rubber washers (8) into the two 3/4" hex nuts which are on the faucet main body (11) and fix the faucet main body to the offset connectors by tightening the two hex nuts.
2. Drill one screw hole on wall, drive the plastic screw sleeve (1) into the screw holes and fix the wall fixing base(2) to the wall using the screw(1),
3. Put the rubber washer (8) into the hex nut on the lower end of the shower pipe (7) and connect it to the faucet main body, tighten the hex nut. Adjust the sliding connector kit(4) on the shower pipe to insert it into the wall fixing base (2) and tighten it by using the two grub screws (3).
4. Connect the conical nut with rubber washer on one end of the flexible shower hose(10) to the shower handset(9), and connect the hex nut with rubber washer on the other end of flexible shower hose to the diverter over the faucet main body, or, should the diverter be built into the faucet main body, connect it directly to the shower outlet connector on the faucet main body. Put the rubber washer mesh (5) into the connector nut of the overhead shower head (6) and then connect it to the upper end of the shower pipe (7).
5. Turn on water supply and check for leakage.



Product Parts Descriptions:

- (1)- Screw and plastic screw sleeve
- (2)- Wall fixing base
- (3)- Grub screws for wall fixing base
- (4)- Sliding connector kit
- (5)- Rubber washer mesh for overhead shower
- (6)- Overhead shower
- (7)- Adjustable shower pipe
- (8)- Rubber washer
- (9)- Shower handset
- (10)-Flexible shower hose
- (11)-Faucet main body
- (12)-Decoration covers for offset connectors
- (13)-Offset connectors



Tools Required